

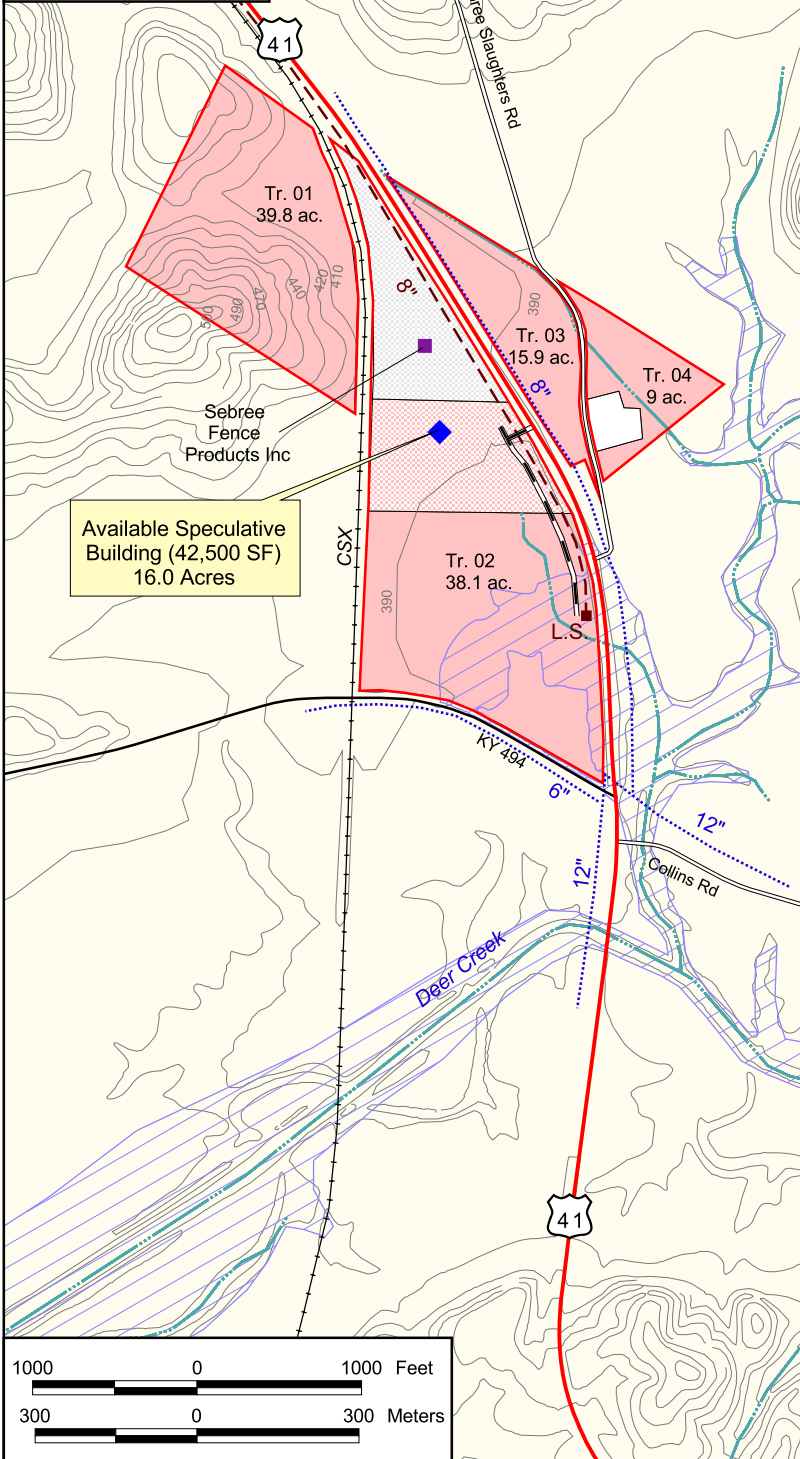
Sebree, Kentucky

Webster County

Site 233-003



- ◆ Available Building
- Existing Industry
- US Highway
- State Road
- Local Road
- Paved
- Unpaved
- Rail
- Sewer Lift Station
- Water Line
- Sewer Line
- Gas Line
- Municipal Boundary
- 100 Year Flood Zone
- Tract Status
- Occupied
- Vacant
- Vacant-building
- Other



Available Speculative Building (42,500 SF)
16.0 Acres

South Sebree Site 233-003 -- 102.8 Acres

LOCATION: Approximately 1.0 mile south of Sebree city limits
ZONING: Protective Covenants
HIGHWAY ACCESS: US 41 bisects the site; Edward T. Breathitt Pennyrile Parkway interchange 3.5 miles northeast of site via US 41 and KY 56.
COMMERCIAL AIR ACCESS: Evansville Regional Airport
Distance: 29 miles north of Sebree
RAIL: CSX Corporation bisects the site
WATER: Webster County Water District
Size Line: 12-inch line at southeast corner of Tr.02;
8-inch line along east side of US 41; 6-inch line along KY 494
SEWER: Sebree Sewer Department
Size Line: 8-inch gravity line serves the site
NATURAL GAS: Texas Gas Transmission Corporation
Size Line: 20-inch line 3,600 feet east of site
ELECTRICITY: Kenergy Corporation
BROADBAND (Type:Service): DSL, Wireless: AT&T
FLOOD DATA: Partially within the 100-year flood zone
OWNERSHIP: Webster County Economic Development Corporation
SCHOOL DISTRICT: Webster County Schools
PRICE PER ACRE: \$7,500

